

FACES2 AIMS ACTIVE INCIDENT MANAGEMENT SYSTEM

Search live or recorded video using plain-language commands and instantly identify weapons, anomalies, suspicious behaviour, and persons of interest. Powered by multi-layer AI models, FACES2 AIMS gives high-security facilities faster insight, stronger situational awareness, and a smarter way to detect, assess, and respond to threats.

DETECTS IN REAL TIME

Weapons

Persons of Interest

Suspicious Behavior

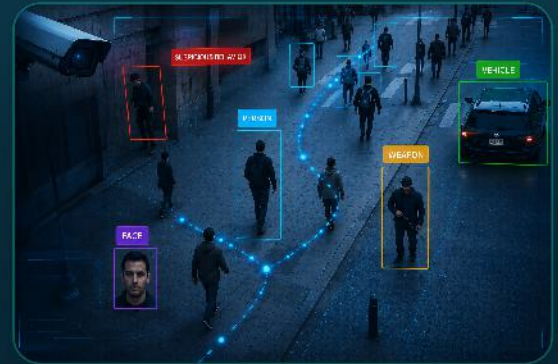
Anomalies

Vehicles

Faces

Drones

License Plates



WHY CHOOSE FACES2 AIMS



REAL-TIME ANALYSIS

Real-time AI analysis for faster response.



UNIFIED DASHBOARD

Centralized dashboard for monitoring and alerts.



ENTERPRISE SCALABILITY

Scales from single sites to enterprise deployments.



SEAMLESS INTEGRATION

Integrates cameras, access points, and wearables.



LIVE COORDINATION

Live coordination with first responders.



MOBILE INTEGRATION

Extend threat detection to mobile for immediate action.

CONTACT US

SECURE YOUR FACILITY TODAY

Schedule a demo to see FACES2 AIMS in action.

www.FACES2.com

sales@visiontechconsulting.ca

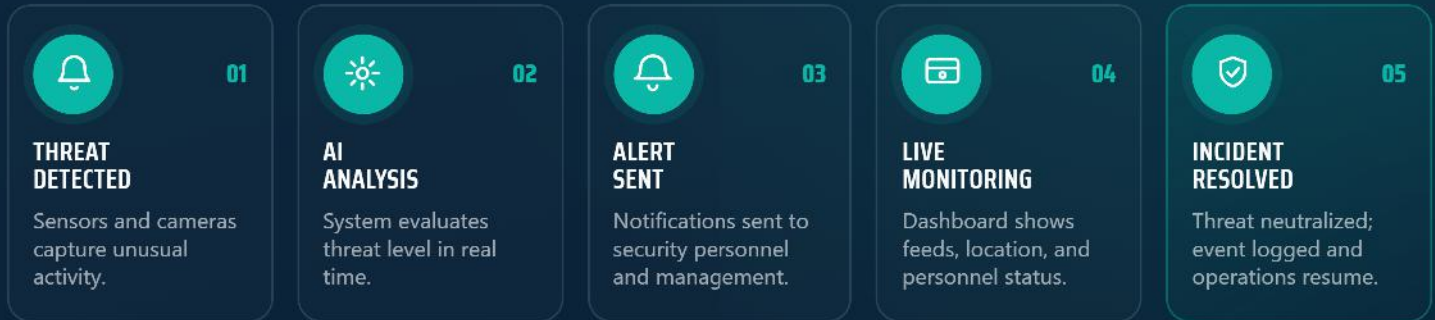
+1 (902) 797-0550



SCAN TO EXPLORE

HOW IT WORKS

From detection to resolution, AIMS coordinates every stage of an incident, sensing unusual activity, scoring threat level with AI, alerting the right people, and logging the full event for compliance.

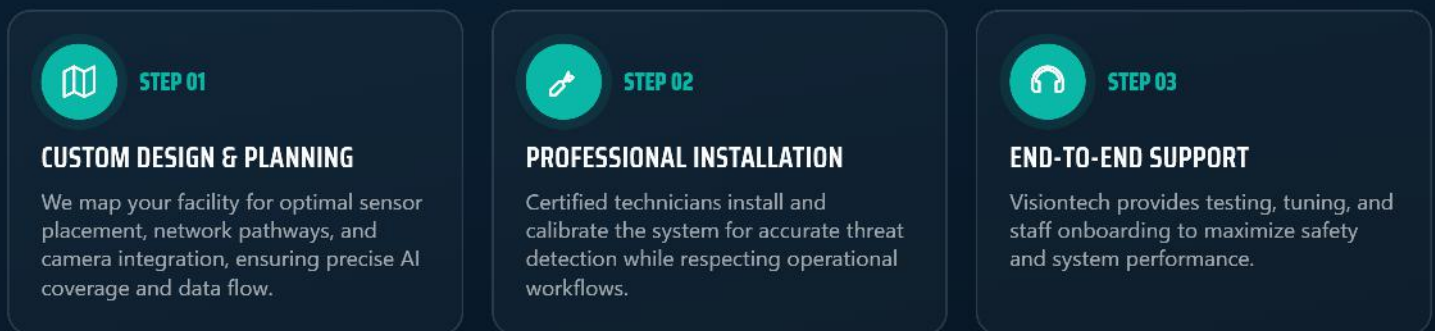


SEE HOW WE COMPARE

Capabilities competitors only partially support.

	FACES2	AVIGILON	FLIR / TELEDYNE	BLACKLINE	GUARDRFID	RHOMBUS
AI THREAT DETECTION	✓ Real-time, predictive	Limited	Limited	Limited	✗	Limited
MULTI-DEVICE INTEGRATION	✓ Cameras, wearables, access points	Cameras only	Cameras + sensors	Wearables	RFID	Cameras only
CENTRALIZED DASHBOARD	✓ Web & mobile	Supported	Supported	Supported	Limited	Supported
FIRST-RESPONDER COORDINATION	✓ Live chat & logs	✗	✗	Limited	✗	Limited
SCALABLE DEPLOYMENT	✓ Single site → Enterprise	Supported	Supported	Limited	Supported	Supported

HOW WE DEPLOY



WHO BENEFITS MOST

